

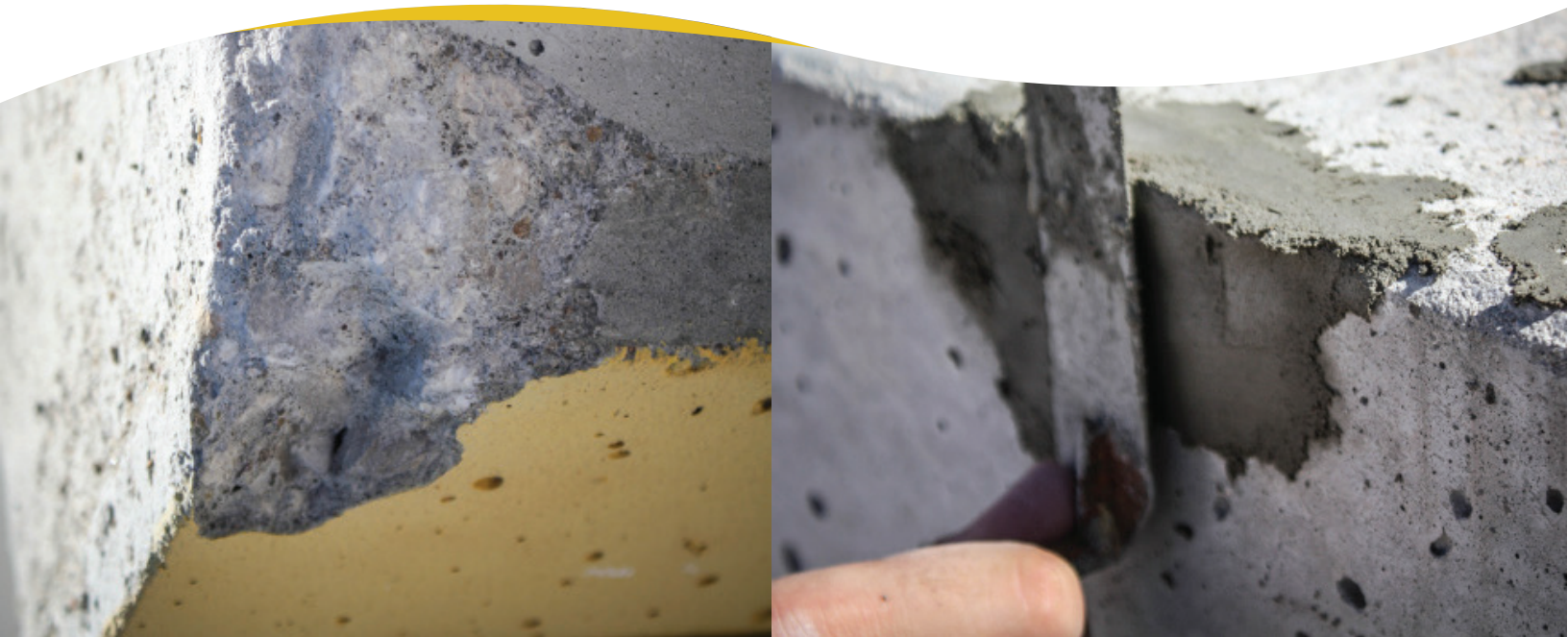
General Purpose Polymer-Modified Concrete Repair Mortar

A general purpose polymer-modified concrete repair mortar for concrete floors, walls, precast, tilt-up and masonry surfaces. SpecPatch 30 can be used for horizontal, vertical, and overhead applications to provide a durable repair that can be shaped by shaving or sanding.



✓ Benefits

- Can be featheredged
- Repairs up to 2" in thickness per lift (4" in isolated areas)
- Designed for interior & exterior repairs
- Can be shaped
- Excellent durability and adhesion
- Dries to natural concrete gray
- One component - Just add water



Usage

- Interior and exterior use
- Horizontal, vertical and overhead repairs
- Fill small holes, spalled areas

Packaging

- 50 lb bag
- Coverage: approx 20 sq-ft @ 1/4"

TYPICAL TEST DATA

Test data based on 5.0 pints water	
Set Time at 70°F (ASTM C-266)	
Initial Set	30-40 min
Final Set	60 min
Compressive Strength (ASTM C-109)	
1 Day	1200 psi
7 Days	5000 psi
28 Days	6500 psi
Freeze-Thaw (ASTM C-672)	
Scaling Resistance	25 cycles = 0% loss
Slant Shear Bond Strength (ASTM C-882)	
7 Days	1680 psi
Flexural Strength (ASTM C-348)	
28 Days	650 psi
Yield	
Yield per bag	.43 cu-ft